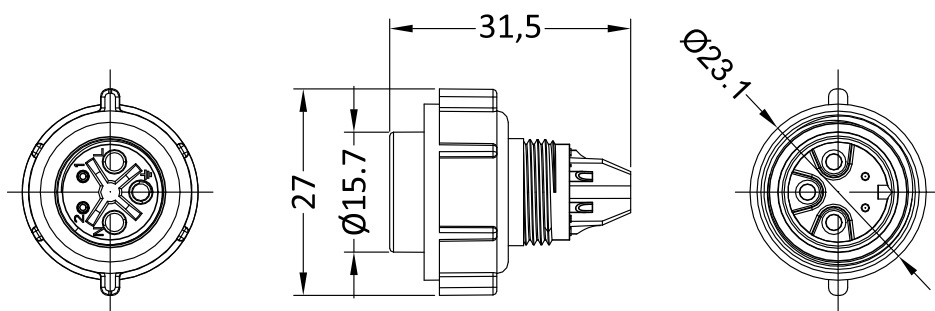
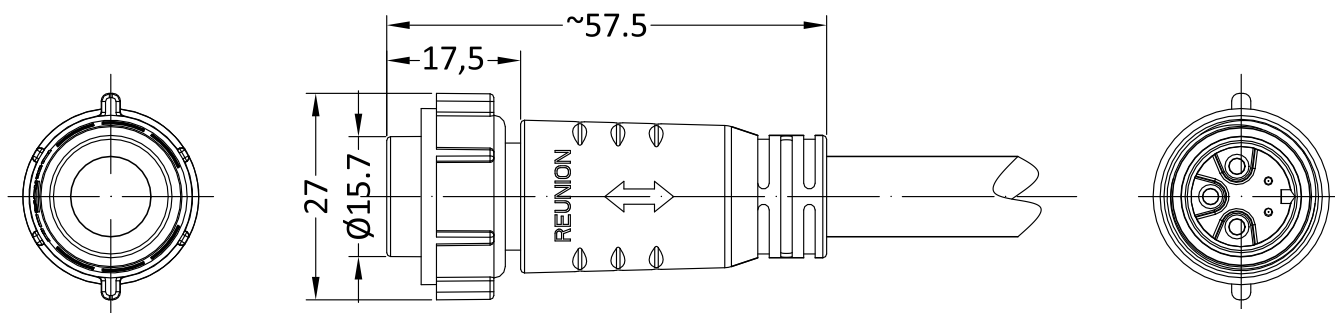


2D REFERENCE SIZE(UNIT:mm)



IMAGES FOR CONNECTOR ONLY



IMAGES FOR CONNECTOR OVERMOLDING

PLUG

MODEL

KEY:G=SINGLE KEY; N=WITHOUT

SERIES: M SERIES; SHELL NO.2

CONTACTS:4=PIN AND PINHOLE
MIXED; 05=5PINS

HOUSING:N=NYLON

CONTACT TYPE: A: MALE
SOLDER; L: FEMALE SOLDER
(based on Power pin)

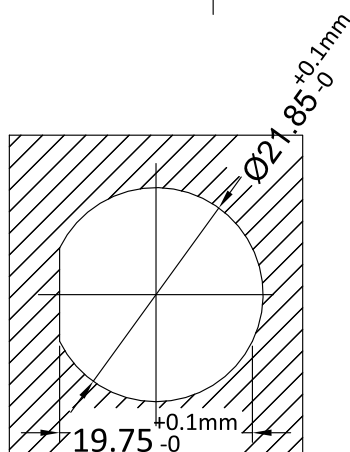
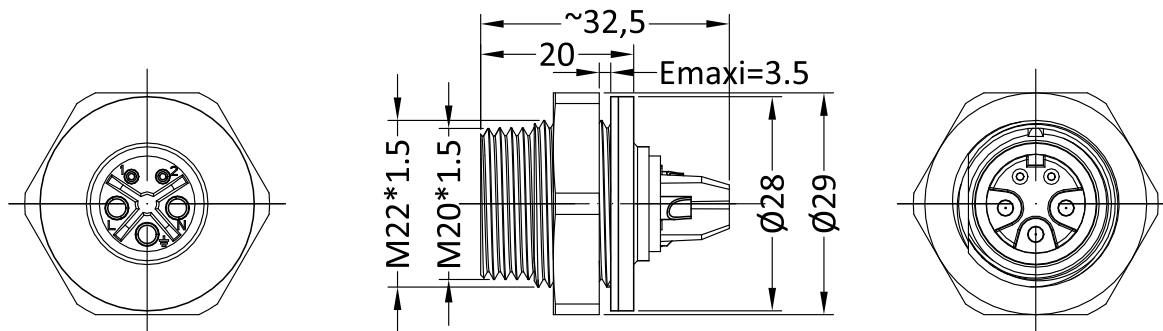
CABLE DIA: 10=CABLE DIA MAX 10.0MM

M=OVERMOLDING(PROCESSING BY REUNION);
OTHERWISE: EMPTY

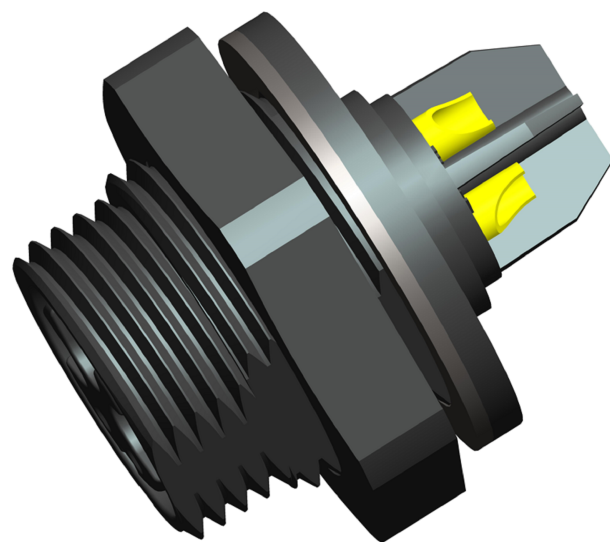
PAG · 2M4 05 · NL 10 M

Housing material: PA6+25%GF;
Contact material: Copper alloy, gold-plated
Contact type: Solder;
Contact dia: Power:2.0mm; Signal:0.9mm;
Rated current: Power:22A; Signal:9A;
Rated voltage: Power:800V;Signal:300V;
Insulation resistance: Power:1000MΩ;
Signal:500MΩ;
IP rating:IP67 waterproof;
Working temp: -45°C~+125°C;
Salt spray corrosion: >24H;
Fire rating: UL 94V0;
Mating cycle: 500 times;

2D REFERENCE SIZE(UNIT:mm)



PANEL HOLE SIZE



FIXED SOCKET MODEL

KEY:G=SINGLE KEY; N=WITHOUT

SERIES: M SERIES; SHELL NO.2

CONTACTS:4=PIN AND PINHOLE
MIXED; 05=5PINS

HOUSING:N=NYLON

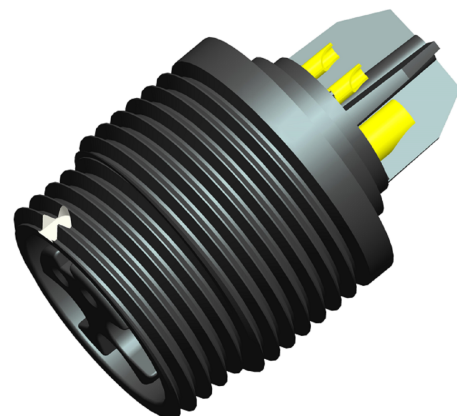
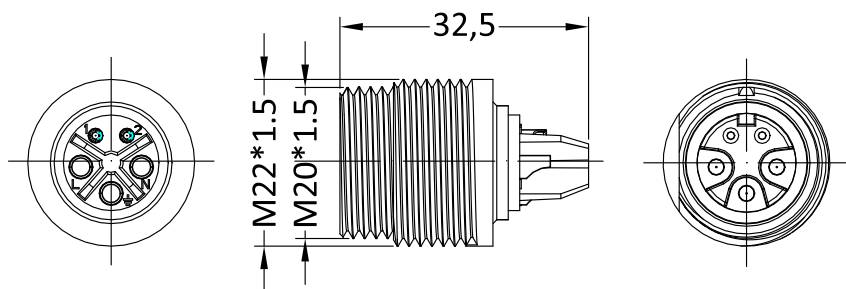
CONTACT TYPE: A: MALE
SOLDER; L: FEMALE
SOLDER; D: PCB-MALE;
N:PCB-FEMALE;
V:PCB-FEMALE ELBOW

SEG · 2M405 · NA

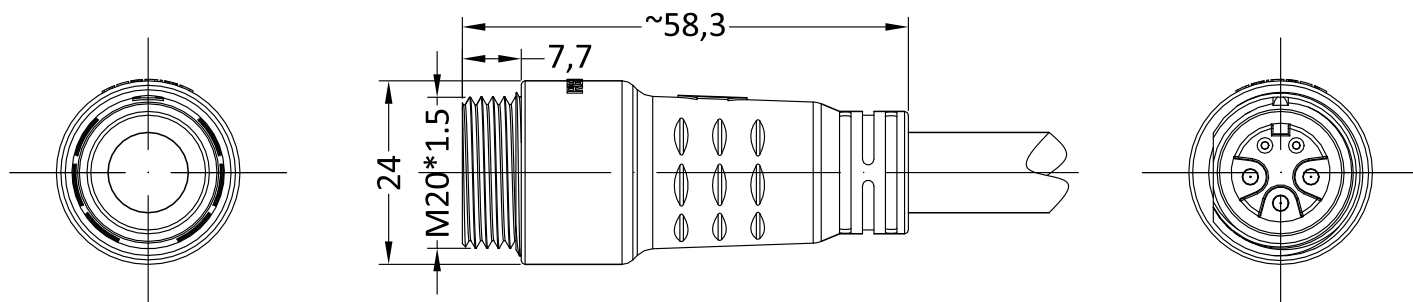
IMAGES FOR CONNECTOR ONLY

Housing material: PA6+25%GF;
Contact material: Copper alloy, gold-plated
Contact type: Solder;
Contact dia: Power:2.0mm; Signal:0.9mm;
Rated current: Power:22A; Signal:9A;
Rated voltage: Power:800V;Signal:300V;
Insulation resistance: Power:1000MΩ;
Signal:500MΩ;
IP rating:IP67 waterproof;
Working temp: -45°C~+125°C;
Salt spray corrosion: >24H;
Fire rating: UL 94V0;
Mating cycle: 500 times;

2D REFERENCE SIZE(UNIT:mm)



IMAGES FOR CONNECTOR ONLY



FREE
SOCKET
MODEL

KEY:G=SINGLE KEY; N=WITHOUT

SERIES: M SERIES; SHELL NO.2

CONTACTS:4=PIN AND PINHOLE
MIXED; 05=5PINS

HOUSING:N=NYLON

CONTACT TYPE: A: MALE
SOLDER; L: FEMALE SOLDER
(based on Power pin)

CABLE DIA: 10=CABLE DIA MAX 10.0MM

M=OVERMOLDING(PROCESSING BY REUNION);
OTHERWISE: EMPTY

SHG · 2M4 05 · NA10 M



IMAGES FOR CONNECTOR OVERMOLDING

Housing material: PA6+25%GF;
Contact material: Copper alloy, gold-plated
Contact type: Solder;
Contact dia: Power:2.0mm; Signal:0.9mm;
Rated current: Power:22A; Signal:9A;
Rated voltage: Power:800V;Signal:300V;
Insulation resistance: Power:1000MΩ;
Signal:500MΩ;
IP rating:IP67 waterproof;
Working temp: -45°C~+125°C;
Salt spray corrosion: >24H;
Fire rating: UL 94V0;
Mating cycle: 500 times;