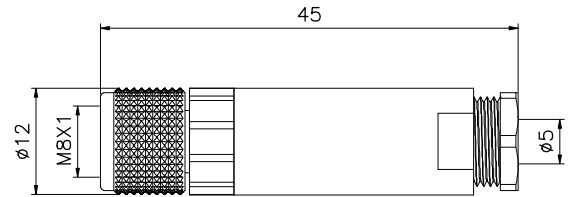


M8 assembled type-female



Technical parameter :

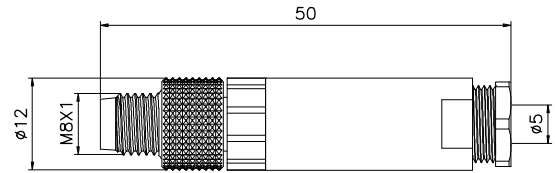
Housing material:	Copper/zinc alloy Nylon
Insulator material:	PA66
Molding material:	PVC/TPU [Ⓞ]
Contact material:	Phosphor copper
Temperature range:	-40°C~+80°C

Insulation resistance:	≥100mΩ
Contact resistance:	≤5mΩ
IP RATE:	IP67/IP68
Mating cycle:	≥500 times
Cable die:	Ø3.5mm~Ø5mm

Electric parameter :

PINS	TYPE		Current	Rated Voltage		Cable		Materials [Ⓞ]
	A	B		A/C	D/C	AWG	AWG	
3			3A	60V	60V	24	0.25	PVC/PUR
4			3A	30V	30V	24	0.25	PVC/PUR

M8 assembled type-male



Technical parameter:

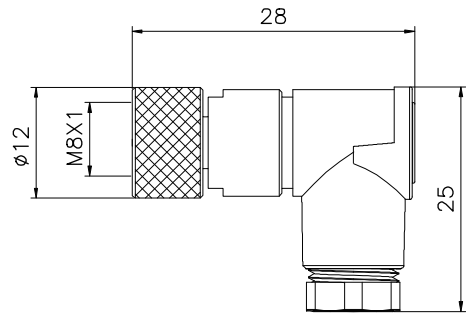
Housing material:	Copper/zinc alloy Nylon
Insulator material:	PA66
Molding material:	PVC/TPU [Ⓟ]
Contact material:	Phosphor copper
Temperature range:	-40°C~+80°C

Insulation resistance:	≥100mΩ
Contact resistance:	≤5mΩ
IP RATE:	IP67/IP68
Mating cycle:	≥500 times
Cable die:	Ø3.5mm~Ø5mm

Electric parameter:

PINS	TYPE		Current	Rated Voltage		Cable		Materials [Ⓟ]
	A	B		A/C	D/C	AWG	AWG	
3			3A	60V	60V	24	0.25	PVC/PUR
4			3A	30V	30V	24	0.25	PVC/PUR

M8 assembled type-female



Technical parameter:

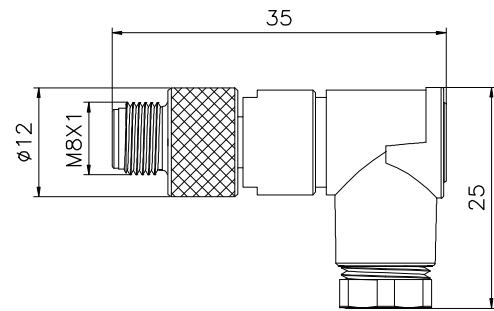
Housing material:	Copper/zinc alloy Nylon
Insulator material:	PA66
Molding material:	PVC/TPU [®]
Contact material:	Phosphor copper
Temperature range:	-40°C~+80°C

Insulation resistance:	≥100mΩ
Contact resistance:	≤5mΩ
IP RATE:	IP67/IP68
Mating cycle:	≥500 times
Cable die:	Ø3.5mm~Ø5mm

Electric parameter:

PINS	TYPE		Current	Rated Voltage		Cable		Materials [®]
	A	B		A/C	D/C	AWG	AWG	
3			3A	60V	60V	24	0.25	PVC/PUR
4			3A	30V	30V	24	0.25	PVC/PUR

M8 assembled type-male



Technical parameter:

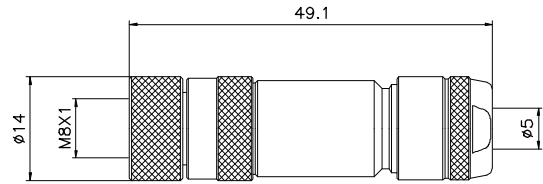
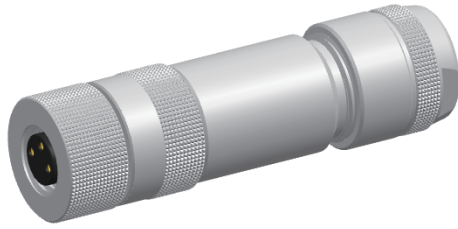
Housing material:	Copper/zinc alloy Nylon
Insulator material:	PA66
Molding material:	PVC/TPU [Ⓞ]
Contact material:	Phosphor copper
Temperature range:	-40°C~+80°C

Insulation resistance:	≥100mΩ
Contact resistance:	≤5mΩ
IP RATE:	IP67/IP68
Mating cycle:	≥500 times
Cable die:	Ø3.5mm~Ø5mm

Electric parameter:

PINS	TYPE		Current	Rated Voltage		Cable		Materials [Ⓞ]
	A	B		A/C	D/C	AWG	AWG	
3			3A	60V	60V	24	0.25	PVC/PUR
4			3A	30V	30V	24	0.25	PVC/PUR

M8 assembled type-female-metal



Technical parameter:

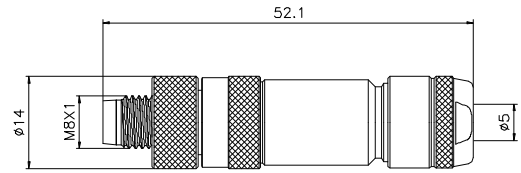
Housing material:	Copper/zinc alloy Nylon
Insulator material:	PA66
Molding material:	PVC/TPU [Ⓞ]
Contact material:	Phosphor copper
Temperature range:	-40°C~+80°C

Insulation resistance:	≥100mΩ
Contact resistance:	≤5mΩ
IP RATE:	IP67/IP68
Mating cycle:	≥500 times
Cable die:	Ø3.5mm~Ø5mm

Electric parameter:

PINS	TYPE		Current	Rated Voltage		Cable		Materials [Ⓞ]
	A	B		A/C	D/C	AWG	AWG	
3			3A	60V	60V	24	0.25	PVC/PUR
4			3A	30V	30V	24	0.25	PVC/PUR

M8 assembled type-male-metal



Technical parameter:

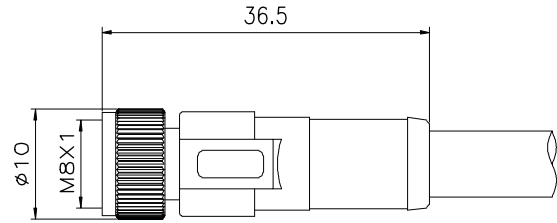
Housing material:	Copper/zinc alloy Nylon
Insulator material:	PA66
Molding material:	PVC/TPU [®]
Contact material:	Phosphor copper
Temperature range:	-40°C~+80°C

Insulation resistance:	≥100mΩ
Contact resistance:	≤5mΩ
IP RATE:	IP67/IP68
Mating cycle:	≥500 times
Cable die:	Ø3.5mm~Ø5mm

Electric parameter:

PINS	TYPE		Current	Rated Voltage		Cable		Materials [®]
	A	B		A/C	D/C	AWG	AWG	
3			3A	60V	60V	24	0.25	PVC/PUR
4			3A	30V	30V	24	0.25	PVC/PUR

M8 female-cable type



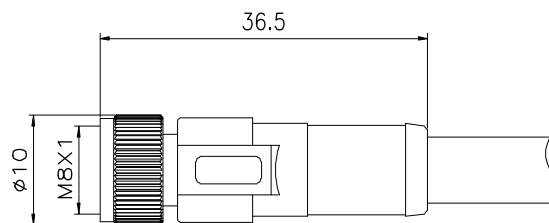
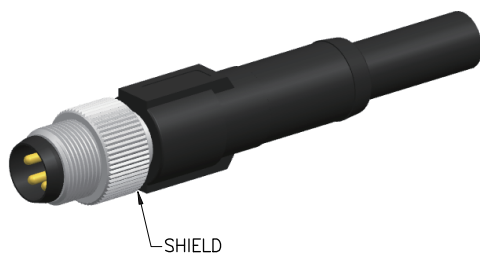
Technical parameter :

Housing Material:	Copper/zinc alloy
Insulator material:	Nylon PA66
Molding material:	PVC/TPU [Ⓞ]
Contact material:	Phosphor copper
Temperature range:	-20°C~+80°C

Insulation resistance:	≥100mΩ
Contact resistance:	≤5mΩ
IP RATE:	IP67/IP68
Mating cycle:	≥500 times
Cable die:	∅3.5mm~∅5mm

PINS	TYPE		Current	Rated Voltage		Cable		Materials [Ⓞ]
	A	B		A/C	D/C	AWG	mm ²	
3			3A	60V	60V	24	0.25	PVC/PUR
4			3A	30V	30V	24	0.25	PVC/PUR
5			3A	30V	30V	24	0.25	PVC/PUR
6			1A	30V	30V	26	0.14	PVC/PUR
8			1A	30V	30V	26	0.14	PVC/PUR

M8 male-cable type



Technical parameter:

Housing Material: Copper/zinc alloy

Insulator material: Nylon PA66

Molding material: PVC/TPU[®]

Contact material: Phosphor copper

Temperature range: $-20^{\circ}\text{C} \sim +80^{\circ}\text{C}$

Insulation resistance: $\geq 100\text{m}\Omega$

Contact resistance: $\leq 5\text{m}\Omega$

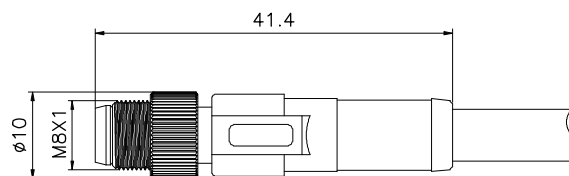
IP RATE: IP67/IP68

Mating cycle: ≥ 500 times

Cable die: $\phi 3.5\text{mm} \sim \phi 5\text{mm}$

PINS	TYPE		Current	Rated Voltage		Cable		Materials [®]
	A	B		A/C	D/C	AWG	mm ²	
3			3A	60V	60V	24	0.25	PVC/PUR
4			3A	30V	30V	24	0.25	PVC/PUR
5			3A	30V	30V	24	0.25	PVC/PUR
6			1A	30V	30V	26	0.14	PVC/PUR
8			1A	30V	30V	26	0.14	PVC/PUR

M8 female-cable type



Technical parameter:

Housing Material: Copper/zinc alloy

Insulator material: Nylon PA66

Molding material: PVC/TPU[®]

Contact material: Phosphor copper

Temperature range: -20°C~+80°C

Insulation resistance: $\geq 100\text{m}\Omega$

Contact resistance: $\leq 5\text{m}\Omega$

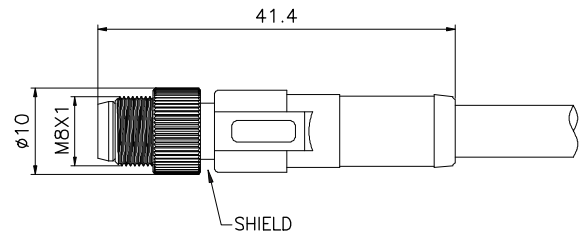
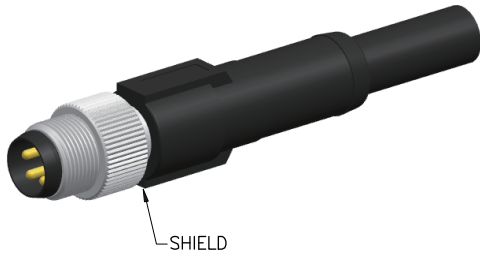
IP RATE: IP67/IP68

Mating cycle: ≥ 500 times

Cable die: $\text{Ø}3.5\text{mm}\sim\text{Ø}5\text{mm}$

PINS	TYPE		Current	Rated Voltage		Cable		Materials [®]
	A	B		A/C	D/C	AWG	mm ²	
3			3A	60V	60V	24	0.25	PVC/PUR
4			3A	30V	30V	24	0.25	PVC/PUR
5			3A	30V	30V	24	0.25	PVC/PUR
6			1A	30V	30V	26	0.14	PVC/PUR
8			1A	30V	30V	26	0.14	PVC/PUR

M8 male-cable type



Technical parameter:

Housing Material: Copper/zinc alloy

Insulator material: Nylon PA66

Molding material: PVC/TPU[Ⓞ]

Contact material: Phosphor copper

Temperature range: $-20^{\circ}\text{C} \sim +80^{\circ}\text{C}$

Insulation resistance: $\geq 100\text{m}\Omega$

Contact resistance: $\leq 5\text{m}\Omega$

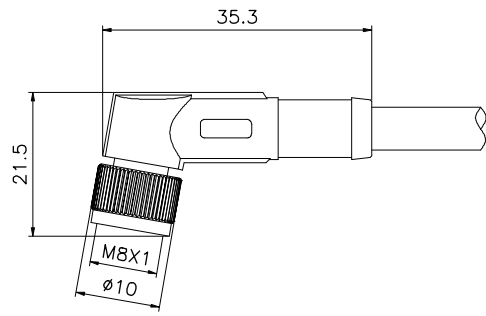
IP RATE: IP67/IP68

Mating cycle: ≥ 500 times

Cable die: $\varnothing 3.5\text{mm} \sim \varnothing 5\text{mm}$

PINS	TYPE		Current	Rated Voltage		Cable		Materials [Ⓞ]
	A	B		A/C	D/C	AWG	mm ²	
3			3A	60V	60V	24	0.25	PVC/PUR
4			3A	30V	30V	24	0.25	PVC/PUR
5			3A	30V	30V	24	0.25	PVC/PUR
6			1A	30V	30V	26	0.14	PVC/PUR
8			1A	30V	30V	26	0.14	PVC/PUR

M8 female-cable type



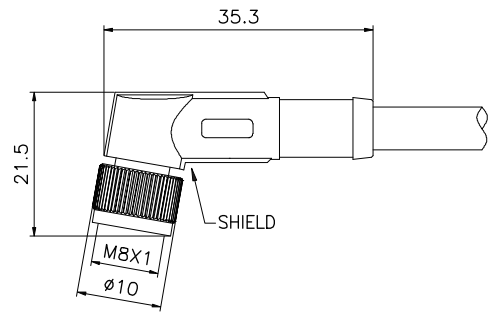
Technical parameter:

Housing Material:	Copper/zinc alloy
Insulator material:	Nylon PA66
Molding material:	PVC/TPU [®]
Contact material:	Phosphor copper
Temperature range:	-20°C~+80°C

Insulation resistance:	≥100mΩ
Contact resistance:	≤5mΩ
IP RATE:	IP67/IP68
Mating cycle:	≥500 times
Cable die:	Ø3.5mm~Ø5mm

PINS	TYPE		Current	Rated Voltage		Cable		Materials [®]
	A	B		A/C	D/C	AWG	mm ²	
3			3A	60V	60V	24	0.25	PVC/PUR
4			3A	30V	30V	24	0.25	PVC/PUR
5			3A	30V	30V	24	0.25	PVC/PUR
6			1A	30V	30V	26	0.14	PVC/PUR
8			1A	30V	30V	26	0.14	PVC/PUR

M8 female-cable type



Technical parameter:

Housing Material: Copper/zinc alloy

Insulator material: Nylon PA66

Molding material: PVC/TPU[®]

Contact material: Phosphor copper

Temperature range: -20°C~+80°C

Insulation resistance: $\geq 100\text{m}\Omega$

Contact resistance: $\leq 5\text{m}\Omega$

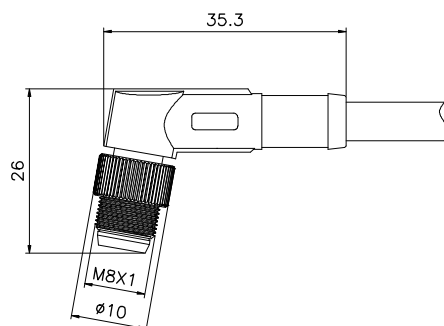
IP RATE: IP67/IP68

Mating cycle: ≥ 500 times

Cable die: $\varnothing 3.5\text{mm}\sim\varnothing 5\text{mm}$

PINS	TYPE		Current	Rated Voltage		Cable		Materials [®]
	A	B		A/C	D/C	AWG	mm ²	
3			3A	60V	60V	24	0.25	PVC/PUR
4			3A	30V	30V	24	0.25	PVC/PUR
5			3A	30V	30V	24	0.25	PVC/PUR
6			1A	30V	30V	26	0.14	PVC/PUR
8			1A	30V	30V	26	0.14	PVC/PUR

M8 male-cable type



Technical parameter:

Housing Material: Copper/zinc alloy

Insulator material: Nylon PA66

Molding material: PVC/TPU[®]

Contact material: Phosphor copper

Temperature range: $-20^{\circ}\text{C}\sim+80^{\circ}\text{C}$

Insulation resistance: $\geq 100\text{m}\Omega$

Contact resistance: $\leq 5\text{m}\Omega$

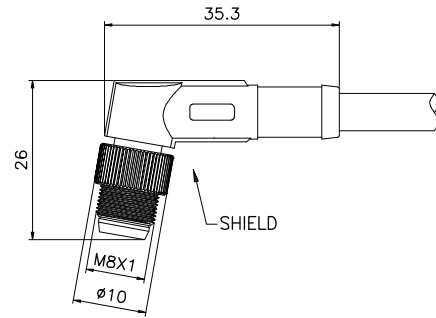
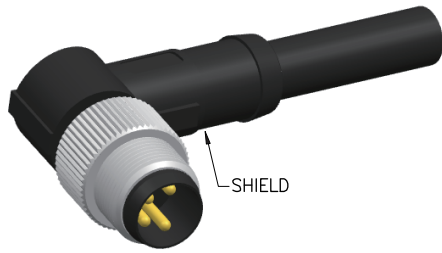
IP RATE: IP67/IP68

Mating cycle: ≥ 500 times

Cable die: $\phi 3.5\text{mm}\sim\phi 5\text{mm}$

PINS	TYPE		Current	Rated Voltage		Cable		Materials [®]
	A	B		A/C	D/C	AWG	mm ²	
3			3A	60V	60V	24	0.25	PVC/PUR
4			3A	30V	30V	24	0.25	PVC/PUR
5			3A	30V	30V	24	0.25	PVC/PUR
6			1A	30V	30V	26	0.14	PVC/PUR
8			1A	30V	30V	26	0.14	PVC/PUR

M8 male-cable type



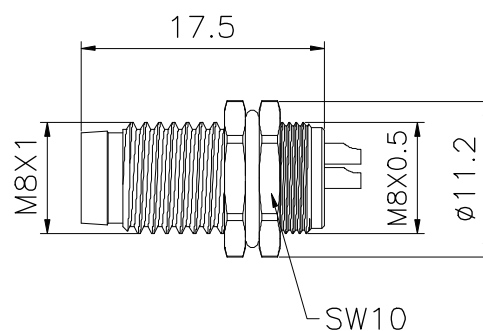
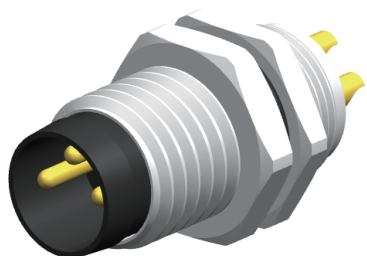
Technical parameter:

Housing Material:	Copper/zinc alloy
Insulator material:	Nylon PA66
Molding material:	PVC/TPU [®]
Contact material:	Phosphor copper
Temperature range:	-20°C~+80°C

Insulation resistance:	≥100mΩ
Contact resistance:	≤5mΩ
IP RATE:	IP67/IP68
Mating cycle:	≥500 times
Cable die:	Ø3.5mm~Ø5mm

PINS	TYPE		Current	Rated Voltage		Cable		Materials [®]
	A	B		A/C	D/C	AWG	mm ²	
3			3A	60V	60V	24	0.25	PVC/PUR
4			3A	30V	30V	24	0.25	PVC/PUR
5			3A	30V	30V	24	0.25	PVC/PUR
6			1A	30V	30V	26	0.14	PVC/PUR
8			1A	30V	30V	26	0.14	PVC/PUR

M8 male-solder type



Technical parameter:

Housing Material: Copper/zinc alloy

Insulator material: Nylon PA66

Molding material: PVC/TPU[®]

Contact material: Phosphor copper

Temperature range: -20°C~+80°C

Insulation resistance: $\geq 100\text{m}\Omega$

Contact resistance: $\leq 5\text{m}\Omega$

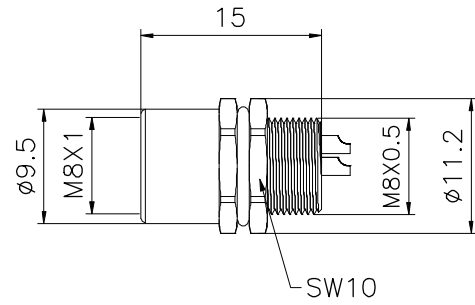
IP RATE: IP67/IP68

Mating cycle: ≥ 500 times

Cable die: $\text{Ø}3.5\text{mm}\sim\text{Ø}5\text{mm}$

PINS	TYPE		Current	Rated Voltage		Cable		Materials [®]
	A	B		A/C	D/C	AWG	mm ²	
3			3A	60V	60V	24	0.25	PVC/PUR
4			3A	30V	30V	24	0.25	PVC/PUR
5			3A	30V	30V	24	0.25	PVC/PUR
6			1A	30V	30V	26	0.14	PVC/PUR
8			1A	30V	30V	26	0.14	PVC/PUR

M8 female-solder type



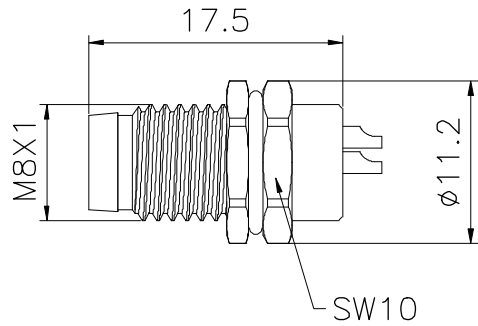
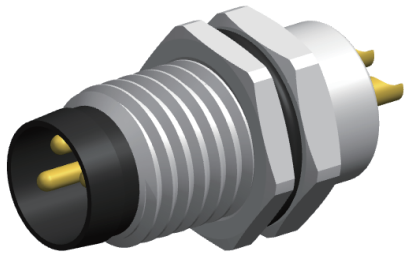
Technical parameter:

Housing Material:	Copper/zinc alloy
Insulator material:	Nylon PA66
Molding material:	PVC/TPU [®]
Contact material:	Phosphor copper
Temperature range:	-20°C~+80°C

Insulation resistance:	≥100mΩ
Contact resistance:	≤5mΩ
IP RATE:	IP67/IP68
Mating cycle:	≥500 times
Cable die:	Ø3.5mm~Ø5mm

PINS	TYPE		Current	Rated Voltage		Cable		Materials [®]
	A	B		A/C	D/C	AWG	mm ²	
3			3A	60V	60V	24	0.25	PVC/PUR
4			3A	30V	30V	24	0.25	PVC/PUR
5			3A	30V	30V	24	0.25	PVC/PUR
6			1A	30V	30V	26	0.14	PVC/PUR
8			1A	30V	30V	26	0.14	PVC/PUR

M8 male-solder type



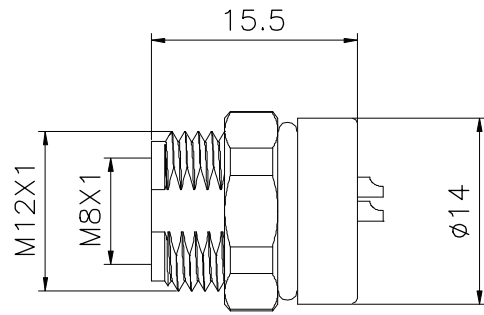
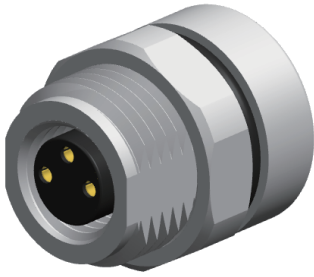
Technical parameter:

Housing Material:	Copper/zinc alloy
Insulator material:	Nylon PA66
Molding material:	PVC/TPU [®]
Contact material:	Phosphor copper
Temperature range:	-20°C~+80°C

Insulation resistance:	≥100mΩ
Contact resistance:	≤5mΩ
IP RATE:	IP67/IP68
Mating cycle:	≥500 times
Cable die:	∅3.5mm~∅5mm

PINS	TYPE		Current	Rated Voltage		Cable		Materials [®]
	A	B		A/C	D/C	AWG	mm ²	
3			3A	60V	60V	24	0.25	PVC/PUR
4			3A	30V	30V	24	0.25	PVC/PUR
5			3A	30V	30V	24	0.25	PVC/PUR
6			1A	30V	30V	26	0.14	PVC/PUR
8			1A	30V	30V	26	0.14	PVC/PUR

M8 female-solder type



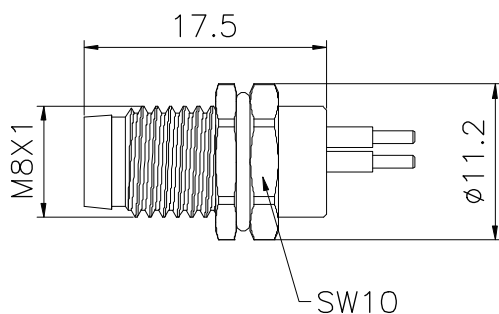
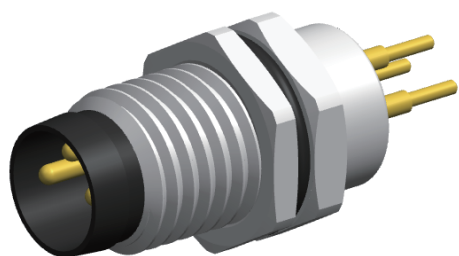
Technical parameter:

Housing Material:	Copper/zinc alloy
Insulator material:	Nylon PA66
Molding material:	PVC/TPU [®]
Contact material:	Phosphor copper
Temperature range:	-20°C~+80°C

Insulation resistance:	≥100mΩ
Contact resistance:	≤5mΩ
IP RATE:	IP67/IP68
Mating cycle:	≥500 times
Cable die:	∅3.5mm~∅5mm

PINS	TYPE		Current	Rated Voltage		Cable		Materials
	A	B		A/C	D/C	AWG	mm ²	
3			3A	60V	60V	24	0.25	PVC/PUR
4			3A	30V	30V	24	0.25	PVC/PUR
5			3A	30V	30V	24	0.25	PVC/PUR
6			1A	30V	30V	26	0.14	PVC/PUR
8			1A	30V	30V	26	0.14	PVC/PUR

M8 male-PCB type



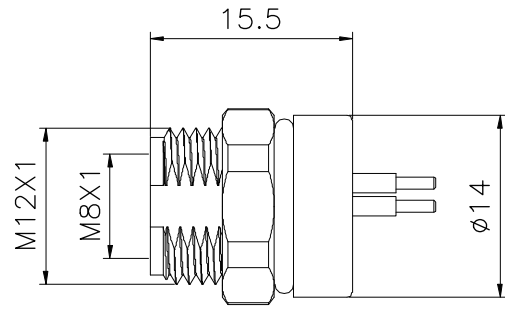
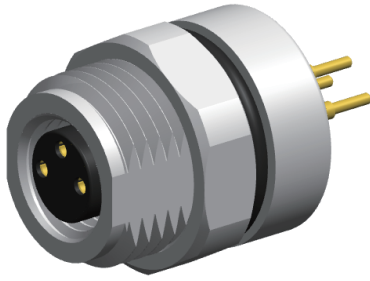
Technical parameter:

Housing Material:	Copper/zinc alloy
Insulator material:	Nylon PA66
Molding material:	PVC/TPU [®]
Contact material:	Phosphor copper
Temperature range:	-20°C~+80°C

Insulation resistance:	≥100mΩ
Contact resistance:	≤5mΩ
IP RATE:	IP67/IP68
Mating cycle:	≥500 times
Cable die:	Ø3.5mm~Ø5mm

PINS	TYPE		Current	Rated Voltage		Cable		Materials [®]
	A	B		A/C	D/C	AWG	mm ²	
3			3A	60V	60V	24	0.25	PVC/PUR
4			3A	30V	30V	24	0.25	PVC/PUR
5			3A	30V	30V	24	0.25	PVC/PUR
6			1A	30V	30V	26	0.14	PVC/PUR
8			1A	30V	30V	26	0.14	PVC/PUR

M8 female-PCB type



Technical parameter:

Housing Material: Copper/zinc alloy

Insulator material: Nylon PA66

Molding material: PVC/TPU[®]

Contact material: Phosphor copper

Temperature range: -20°C~+80°C

Insulation resistance: $\geq 100\text{m}\Omega$

Contact resistance: $\leq 5\text{m}\Omega$

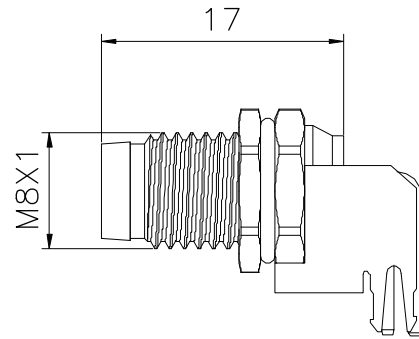
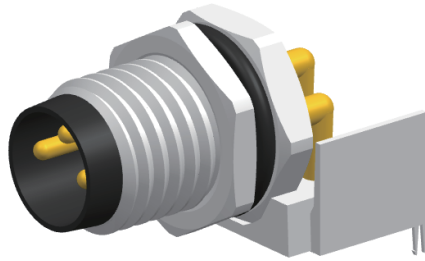
IP RATE: IP67/IP68

Mating cycle: ≥ 500 times

Cable die: $\text{Ø}3.5\text{mm}\sim\text{Ø}5\text{mm}$

PINS	TYPE		Current	Rated Voltage		Cable		Materials
	A	B		A/C	D/C	AWG	mm ²	
3			3A	60V	60V	24	0.25	PVC/PUR
4			3A	30V	30V	24	0.25	PVC/PUR
5			3A	30V	30V	24	0.25	PVC/PUR
6			1A	30V	30V	26	0.14	PVC/PUR
8			1A	30V	30V	26	0.14	PVC/PUR

M8 male-PCB type



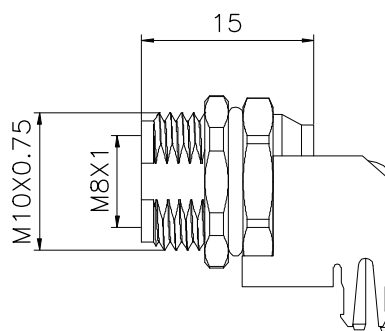
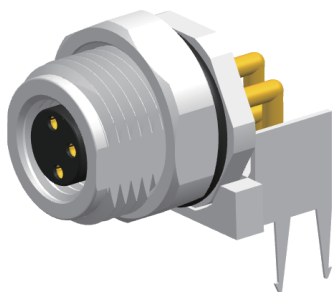
Technical parameter:

Housing Material:	Copper/zinc alloy
Insulator material:	Nylon PA66
Molding material:	PVC/TPU [®]
Contact material:	Phosphor copper
Temperature range:	-20°C~+80°C

Insulation resistance:	≥100mΩ
Contact resistance:	≤5mΩ
IP RATE:	IP67/IP68
Mating cycle:	≥500 times
Cable die:	Ø3.5mm~Ø5mm

PINS	TYPE		Current	Rated Voltage		Cable		Materials [®]
	A	B		A/C	D/C	AWG	mm ²	
3			3A	60V	60V	24	0.25	PVC/PUR
4			3A	30V	30V	24	0.25	PVC/PUR
5			3A	30V	30V	24	0.25	PVC/PUR
6			1A	30V	30V	26	0.14	PVC/PUR
8			1A	30V	30V	26	0.14	PVC/PUR

M8 female-PCB type



Technical parameter:

Housing Material: Copper/zinc alloy

Insulator material: Nylon PA66

Molding material: PVC/TPU[®]

Contact material: Phosphor copper

Temperature range: -20°C~+80°C

Insulation resistance: $\geq 100\text{m}\Omega$

Contact resistance: $\leq 5\text{m}\Omega$

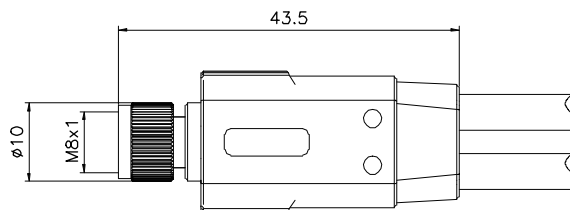
IP RATE: IP67/IP68

Mating cycle: ≥ 500 times

Cable die: $\varnothing 3.5\text{mm} \sim \varnothing 5\text{mm}$

PINS	TYPE		Current	Rated Voltage		Cable		Materials [®]
	A	B		A/C	D/C	AWG	mm ²	
3			3A	60V	60V	24	0.25	PVC/PUR
4			3A	30V	30V	24	0.25	PVC/PUR
5			3A	30V	30V	24	0.25	PVC/PUR
6			1A	30V	30V	26	0.14	PVC/PUR
8			1A	30V	30V	26	0.14	PVC/PUR

M8 female- 1 to 2 cable type



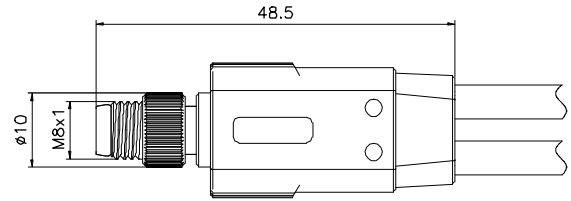
Technical parameter:

Housing Material:	Copper/zinc alloy
Insulator material:	Nylon PA66
Molding material:	PVC/TPU [®]
Contact material:	Phosphor copper
Temperature range:	-20°C~+80°C

Insulation resistance:	≥100mΩ
Contact resistance:	≤5mΩ
IP RATE:	IP67/IP68
Mating cycle:	≥500 times
Cable die:	Ø3.5mm~Ø5mm

PINS	TYPE		Current	Rated Voltage		Cable		Materials [®]
	A	B		A/C	D/C	AWG	mm ²	
3			3A	60V	60V	24	0.25	PVC/PUR
4			3A	30V	30V	24	0.25	PVC/PUR
5			3A	30V	30V	24	0.25	PVC/PUR
6			1A	30V	30V	26	0.14	PVC/PUR
8			1A	30V	30V	26	0.14	PVC/PUR

M8 male- 1 to 2 cable type



Technical parameter:

Housing Material: Copper/zinc alloy

Insulator material: Nylon PA66

Molding material: PVC/TPU[®]

Contact material: Phosphor copper

Temperature range: $-20^{\circ}\text{C} \sim +80^{\circ}\text{C}$

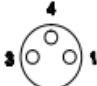

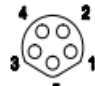


Insulation resistance: $\geq 100\text{m}\Omega$

Contact resistance: $\leq 5\text{m}\Omega$

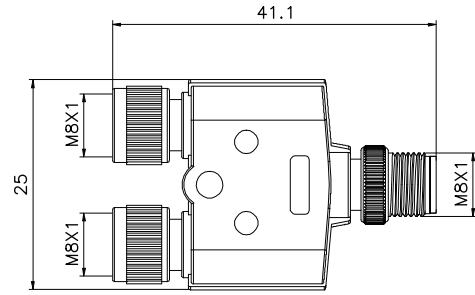
IP RATE: IP67/IP68

Mating cycle: ≥ 500 times

Cable die: $\phi 3.5\text{mm} \sim \phi 5\text{mm}$

PINS	TYPE		Current	Rated Voltage		Cable		Materials [®]
	A	B		A/C	D/C	AWG	mm ²	
3			3A	60V	60V	24	0.25	PVC/PUR
4			3A	30V	30V	24	0.25	PVC/PUR
5			3A	30V	30V	24	0.25	PVC/PUR
6			1A	30V	30V	26	0.14	PVC/PUR
8			1A	30V	30V	26	0.14	PVC/PUR

M8 -1 to 2 type



Technical parameter:

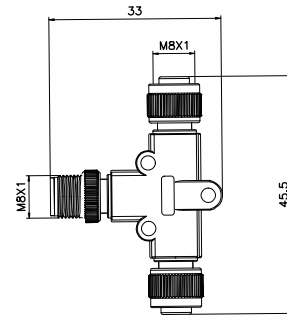
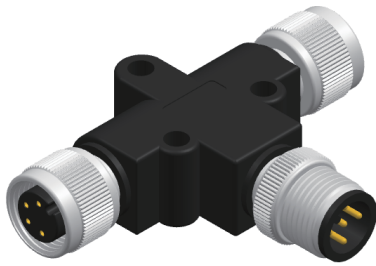
Housing Material:	Copper/zinc alloy
Insulator material:	Nylon PA66
Molding material:	PVC/TPU [®]
Contact material:	Phosphor copper
Temperature range:	-20°C~+80°C

Insulation resistance:	≥100mΩ
Contact resistance:	≤5mΩ
IP RATE:	IP67/IP68
Mating cycle:	≥500 times
Cable die:	Ø3.5mm~Ø5mm



PINS	TYPE		Current	Rated Voltage		Cable		Materials
	A	B		A/C	D/C	AWG	mm ²	
3			3A	60V	60V	24	0.25	PVC/PUR
4			3A	30V	30V	24	0.25	PVC/PUR
5			3A	30V	30V	24	0.25	PVC/PUR
6			1A	30V	30V	26	0.14	PVC/PUR
8			1A	30V	30V	26	0.14	PVC/PUR

M8 -1 to 2 type



Technical parameter:

Housing Material:	Copper/zinc alloy
Insulator material:	Nylon PA66
Molding material:	PVC/TPU [®]
Contact material:	Phosphor copper
Temperature range:	-20°C~+80°C

Insulation resistance:	≥100mΩ
Contact resistance:	≤5mΩ
IP RATE:	IP67/IP68
Mating cycle:	≥500 times
Cable die:	∅3.5mm~∅5mm



PINS	TYPE		Current	Rated Voltage		Cable		Materials [®]
	A	B		A/C	D/C	AWG	mm ²	
3			3A	60V	60V	24	0.25	PVC/PUR
4			3A	30V	30V	24	0.25	PVC/PUR
5			3A	30V	30V	24	0.25	PVC/PUR
6			1A	30V	30V	26	0.14	PVC/PUR
8			1A	30V	30V	26	0.14	PVC/PUR